

Get your body and heart warm!

DOCTOR HAND



Doctor Hand is a medical device approved by KFSA designed to treat various pain and diseases by applying the far-infrared ray. The far-infrared ray with 8~14um most suitable for a human body can be delivered as deep as 4cm under the skin and promotes blood circulation by raising temperature of deep parts and expanding capillaries. In addition, it has an excellent effects on various pain, muscle aches, nervous system disorders, digestive disorders, woman's diseases and senile disorders etc. by enhancing metabolism and regeneration ability of tissues.



Various pains ●

Woman's diseases ●

Digestive disorders ●

Blood circulation disorders ●



Power of Far-Infrared Ray *DOCTOR HAND*



• Convenience



Ergonomic hand bar



Time setting (continuous/ 1~5hrs)



5 step Temp. setting (40~60°C)



• Technology

Approval from KFDA as a Thermal therapy device.
Approval from STR of FDA for non-toxic ceramic.
Unique medical device acquired 2 patents.

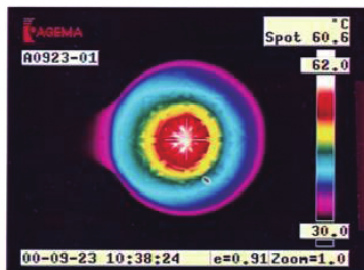


Patent #10-0302945 Thermal therapy device



Patent #10-0296885 Manufacturing formula of far-infrared radiation ceramic

• Far-infrared ray photo of heater's ceramic area taken by Far-infrared ray application evaluation center



8~14 μ m of optimized far-infrared ray is radiating

When body temperature gets down 1°C?



Excellent heating effect by radiation of far-infrared ray!



- ▶ Product(type): Doctor Hand (HS-2000)
- ▶ MFG/Product approval: #670/ #98-89
- ▶ This product is a 'Medical Device'

- ▶ Power: AC 220V
- ▶ Weight: Approx. 2KG
- ▶ Protection type against electric shock: class 2 BF type
- ▶ Rated frequency: 60Hz
- ▶ Power consumption: 33W